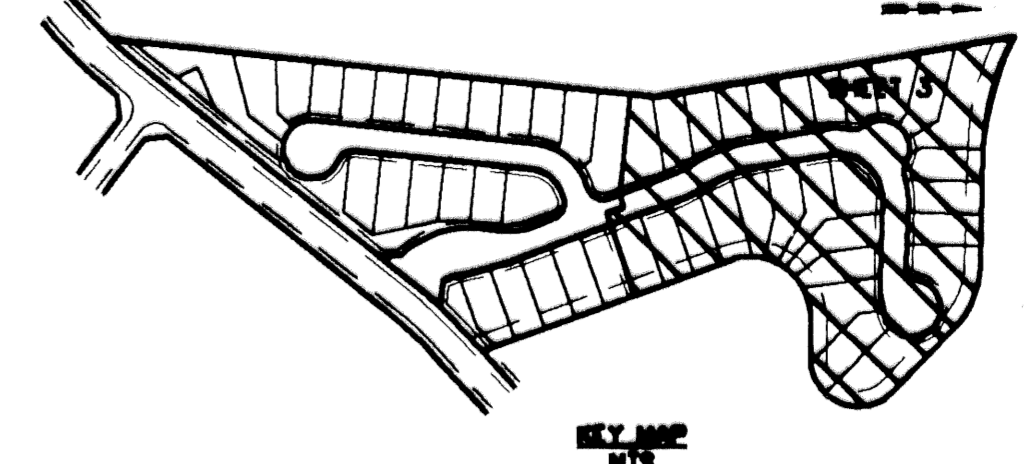
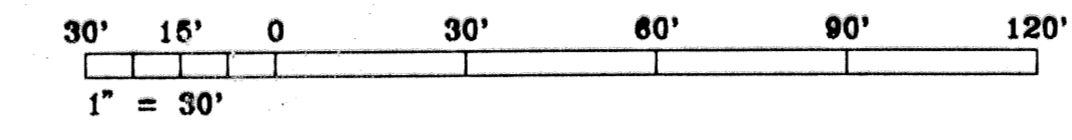


AVONDALE

BEING A REPLAT OF TRACT "K" OF PALM BEACH LAKES PLAT No. 2
AS RECORDED IN PLAT BOOK 44, PAGES 1 THRU 19
CITY OF WEST PALM BEACH, FLORIDA - PALM BEACH COUNTY, FLORIDA

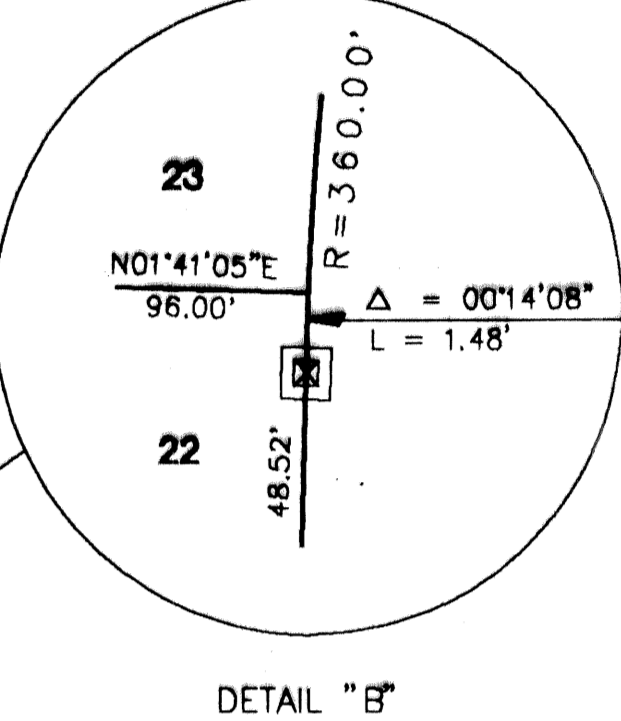
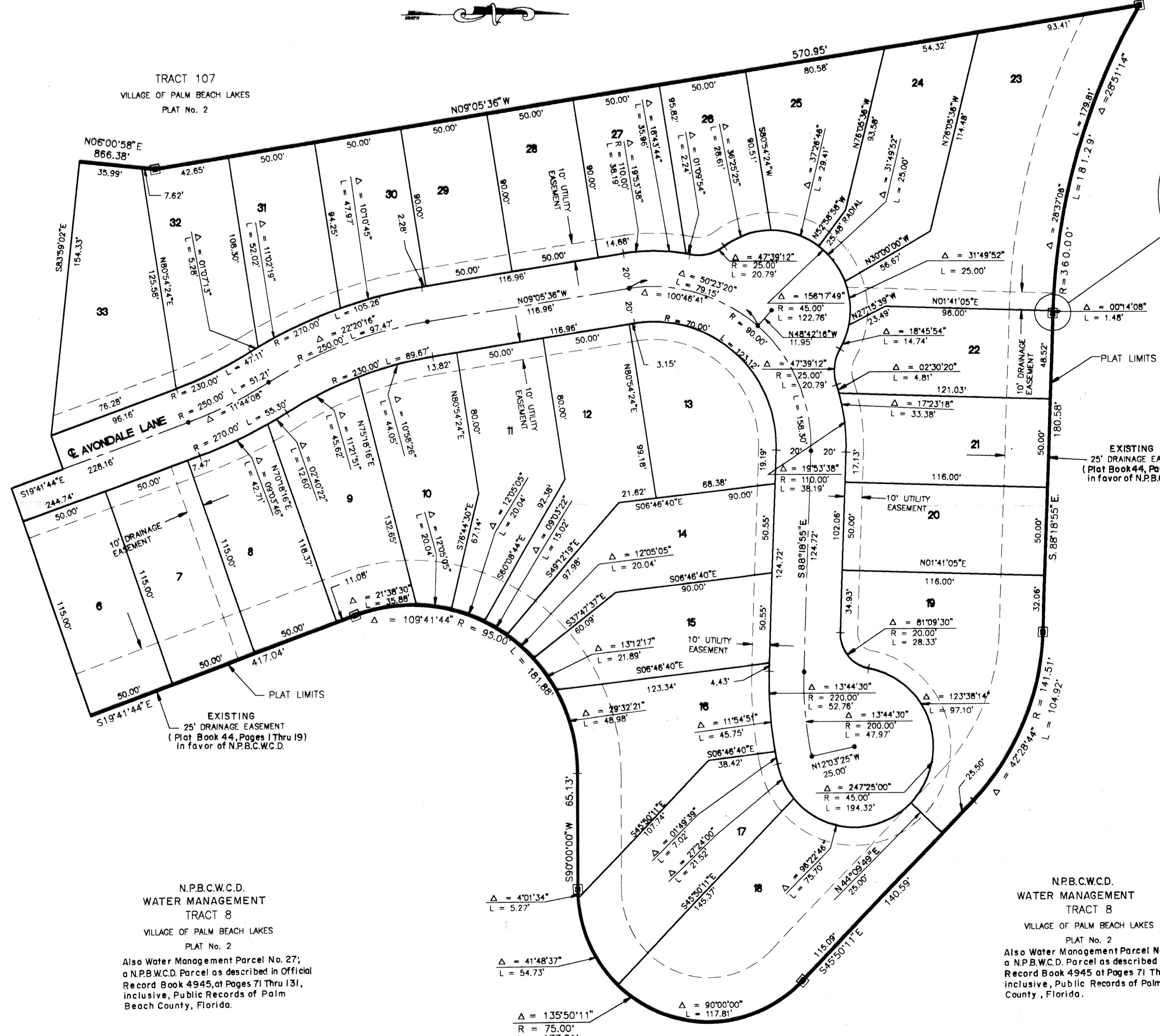
APRIL 1994 SHEET 3 OF 3



STATE OF FLORIDA
COUNTY OF PALM BEACH
This plat was filed for
record at _____ M. this _____ day
of _____ 1994, and duly
recorded in Plat Book No. _____
on Pages _____ thru _____
DOROTHY H. WILKEN
Clerk Circuit Court
By _____ D.C.

- LEGEND**
- R = Radius
 - Δ = Delta
 - L = Arc Length
 - = Set Permanent Reference Monument (4x4 Concrete Monument) 14659
 - = Permanent Control Point
 - P.B. = Plat Book
 - P.G. = Page
 - C = Centerline
 - NPB.C.W.C.D. = Northern Palm Beach County Water Control District

MATCH LINE SEE SHEET 2 OF 3



SUBDIVISION - Avondale
BOOK - 73
PAGE - 57
FLOOD ZONE -
QUAD -
SE -
ZIP CODE -
PLAT NAME - C/1401B
TA2 168

COMPUTED _____
CHECKED _____
APPROVED _____
MTR NO 93-421

N.P.B.C.W.C.D.
WATER MANAGEMENT
TRACT 8
VILLAGE OF PALM BEACH LAKES
PLAT No. 2
Also Water Management Parcel No. 27,
a N.P.B.C.W.C.D. Parcel as described in Official
Record Book 4945, at Pages 71 Thru 131,
inclusive, Public Records of Palm
Beach County, Florida.

N.P.B.C.W.C.D.
WATER MANAGEMENT
TRACT 8
VILLAGE OF PALM BEACH LAKES
PLAT No. 2
Also Water Management Parcel No. 27,
a N.P.B.C.W.C.D. Parcel as described in Official
Record Book 4945, at Pages 71 Thru 131,
inclusive, Public Records of Palm Beach
County, Florida.

This instrument was prepared by:
ALLAN FRANK OSUND P.L.S.
Gee & Jensen, Engineers, Architects, Planners, Inc.
One Harvard Circle
West Palm Beach, Florida 33409-1923